



Barking &
Dagenham

Start for Life & Family Hub

Offer



one borough; one community; no one left behind

Is a collaborative and holistic early intervention approach involving multiple departments across the council

The 6 funded key work streams

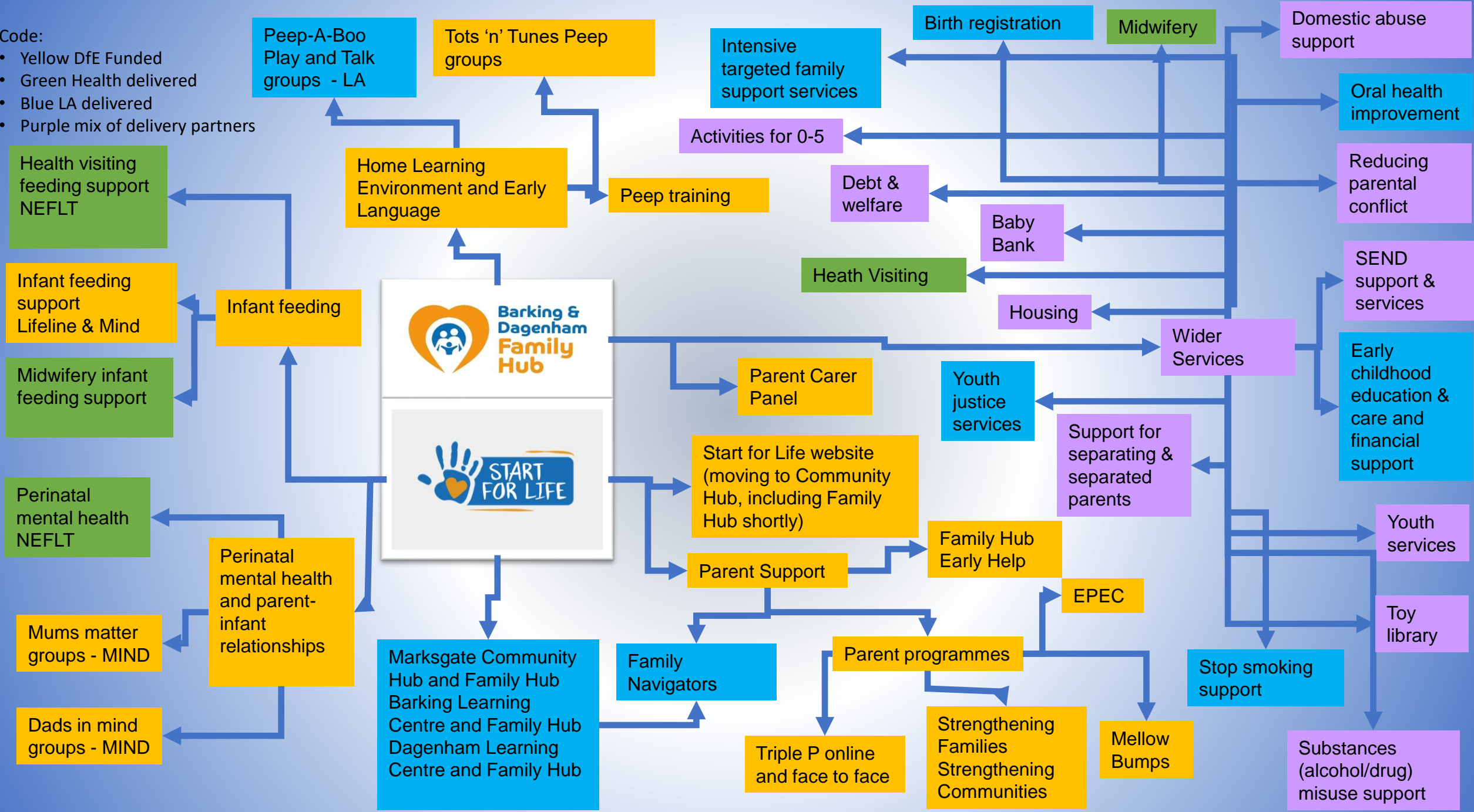
- Infant Feeding
- Perinatal Mental Health & Parent-Infant relationships
- Home learning Environment & Early Language
- Parenting support
- Parent Carer Panel
- Website

The service is for families from conception to children aged 19 and up to 25 for those with SEND.

Aims:

1. Seamless support for families
2. A welcoming hub for families
3. The information families need when they need it
4. An empowered Start for Life workforce
5. Continually improving the Start for Life offer
6. Leadership for change

Code:
 • Yellow DfE Funded
 • Green Health delivered
 • Blue LA delivered
 • Purple mix of delivery partners



Family Hub Locations

Family Navigators

familynavigators@lbbd.gov.uk

Barking Learning Centre and Family Hub



Victoria Michelle Saira

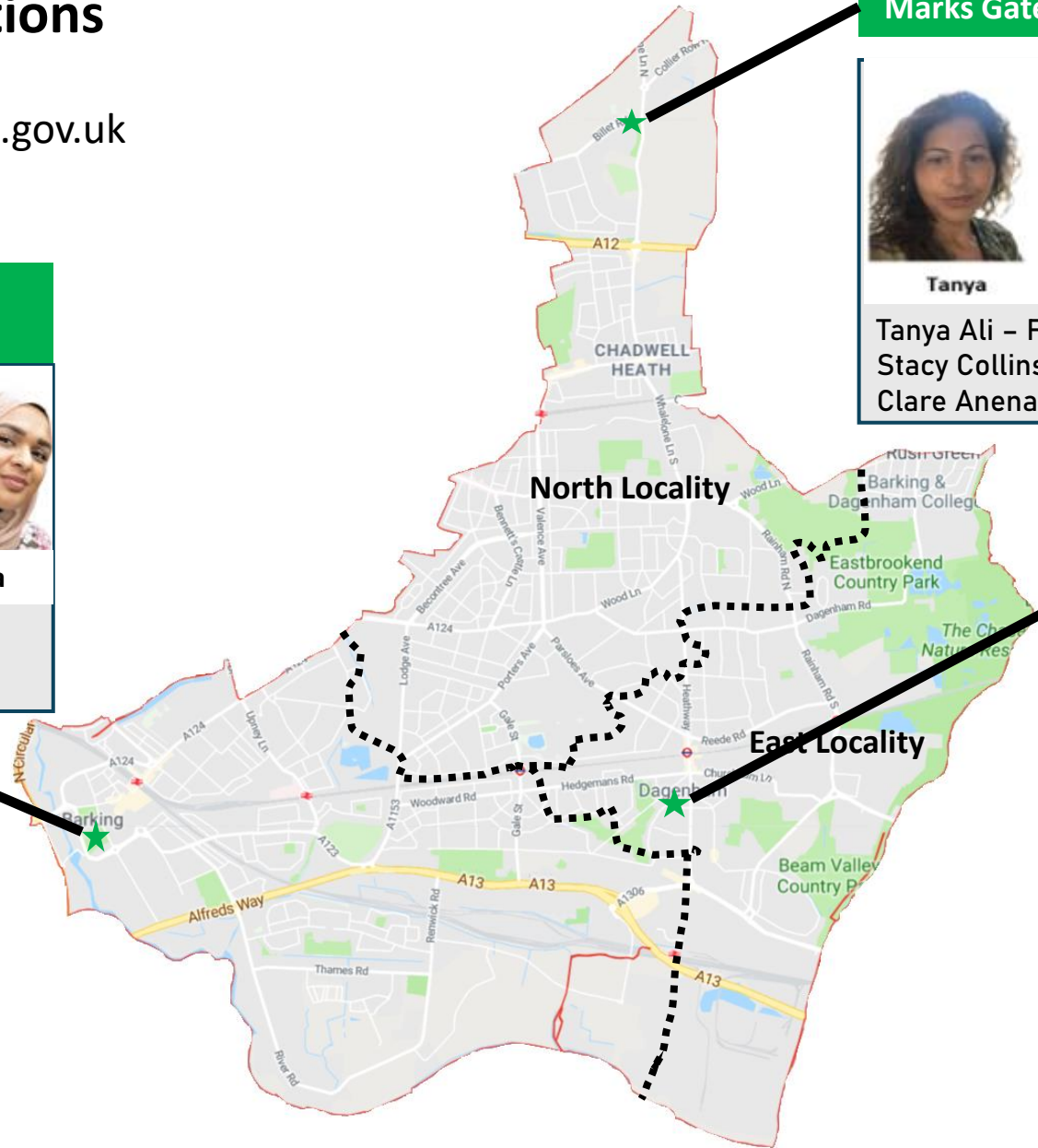
Michelle Peters – Family Navigator
Victoria Meribe – Family Navigator
Saira Rana - Family Hub Coordinator

Marks Gate Community and Family Hub



Tanya Stacy Claire

Tanya Ali – Family Navigator
Stacy Collins – Family Navigator
Clare Anena – Family Hub Coordinator



Dagenham Learning Centre and Family Hub



Ashley Tamzida Yolanda

Ashley Morris – Family Navigator
Tamzida Pasha – Family Navigator
Yolanda Wireko – Family Hub Coordinator

Family Navigators Role

- Direct work with families, including signposting to relevant services (supporting to navigate through services) up to 4 weeks
- Working with schools and partners to support vulnerable pupils to prevent escalation to tier 2B and tier 3 services
- Provide support and guidance to our partner agencies i.e. health on thresholds, using the GCP2 and in being lead professionals and completing TAF'S
- Deliver training - Solihull, Genogram, Lead Professional & TAF, soon will also be delivering some parenting Programmes
- Outreach to partner services – health clinics, hostels

Family Navigators act as a 'bridge' between Families and Targeted Early Help Services to support families to access the right service at the right time.

Infant Feeding support sessions



Lifeline & Mind:

A safe and non-judgemental space for you to come and get some feeding support and meet other new parents in the area.

Support through group session, stay and play equipment set up for older children too

Support for breast and bottle feeding

121 sessions also available

Perinatal Mental Health & Parent Infant Relationships



Pregnancy and a new baby can bring a range of emotions. Parental loneliness is a very common feeling, for both parents.

Mums Matter (Mind) for mums feeling overwhelmed, tearful, or anxious, Mums Matter can help you take control of your health and wellbeing, so you can enjoy motherhood to the full

Dads in Mind (Mind) The Dads in Mind project has been developed to aid fathers in the early stages of parenting, focusing on those with a child between 0- 3 years old. The support is inclusive to all dads/fathers, dads with current or previous low to moderate mental health needs, or maybe experiencing some difficulties in their relationships.

- Drop in football sessions
- Barber shop coming

- **Empowering Parents, Empowering Communities (EPEC) Autism** – for children experiencing social communication difficulties or on the pathway for a diagnosis
- **Triple P Online Baby** helps new and expecting parents and carers get off to a positive start
- **Triple P Online** has practical tips for parents and carers with children under 12.
- **Triple P baby face to face** – helps new parents and carers get off to a positive start. For the first year of life
- **Strengthening Families, Strengthening Communities (SFSC)** for parents of children aged 0-18 years.
- **Mellow Parenting** – from 22 weeks of pregnancy until birth

- 1:1 support for families with 2a levels of need that need that little bit more support
- The service will provide direct hands on and practical support for families who need a single agency offer of support.
- This support will be available in the community and in an environment that is safe and convenient for the family, including their home.
- If you have a family who is isolated, struggling with accessing support, need confidence building etc please refer to our service

Criteria

- Be pregnant or have a child under 5 years old
- Level of support needed is 2a
- No current involvement with Early Help or Social Services
- Must live in the borough
- Must need more than sign positing support

Peep – speech, language and communication groups



These groups are for all families for 0-5 year olds

Universal groups will support parents to engage in supporting their children's speech, language and communication

Targeted groups support children with additional needs

There is training that can be provided to staff to learn more about speech, language and communication needs and how you can support children with the needs

The PEEP offer is made up of:

- Peep-a-Boo (0-18 months) universal group – 3 a week
- Play and Talk (18 months to 4 years) universal group – 8 a week
- Play and Talk (18 months to 4 years) targeted 6 week group – 6 a half term
- Musical Movement (0-4) Started September – 2 groups a week

- Parent and carer panels set up
- Feedback from parent and carer panels is used for continuous improvement of services
- Recruit a wide range of parents / carers on the panels.
- Parents / Carers empowered to lead the panels.
- There will be mechanisms to collect wider parent feedback

- There will be a virtual place that a family can visit to access information on the advice and support available across the 0-25 age range
- We have a website where we are aiming to have all the information / links to the information that parents might need – <https://startforlife.lbbd.gov.uk/>
- Please tell parents you work with about this site.

Added services



- The Source Baby Bank at BLC and Dagenham Library
 - Drop-in support to collect baby related items
 - 12-week access to services to
- Oral health service
 - Support for families to help teeth brushing and registering with a dentist
 - Free toothbrushes and toothpaste
- Free online mediation for parents on low income to support parents who are separating or separated stay out of court
- Toy library – being developed for children aged 0-5, focusing on those with SEND
- Vitamin Distribution
- Breast pump hire via lifeline
- Baby Boxes – including baby essentials
- GCP2A Pilot
- New birth registrations – to engage with families at the earliest point
- Online family registration forms
- Online referrals screened through EHM
- Stay and play groups coming soon

Thank you



Any Questions / Comments?
